

## **General Rule Making Powers of the Club Racing Board**

Recommend a rule change or car reclassification:

- Adding, removing, or modifying language
- Changing the definition of what is currently written
- Changing the specifications for all cars in an entire class (i.e. SRF, FV)
- Moving a car from one class to another

Clarify a rule:

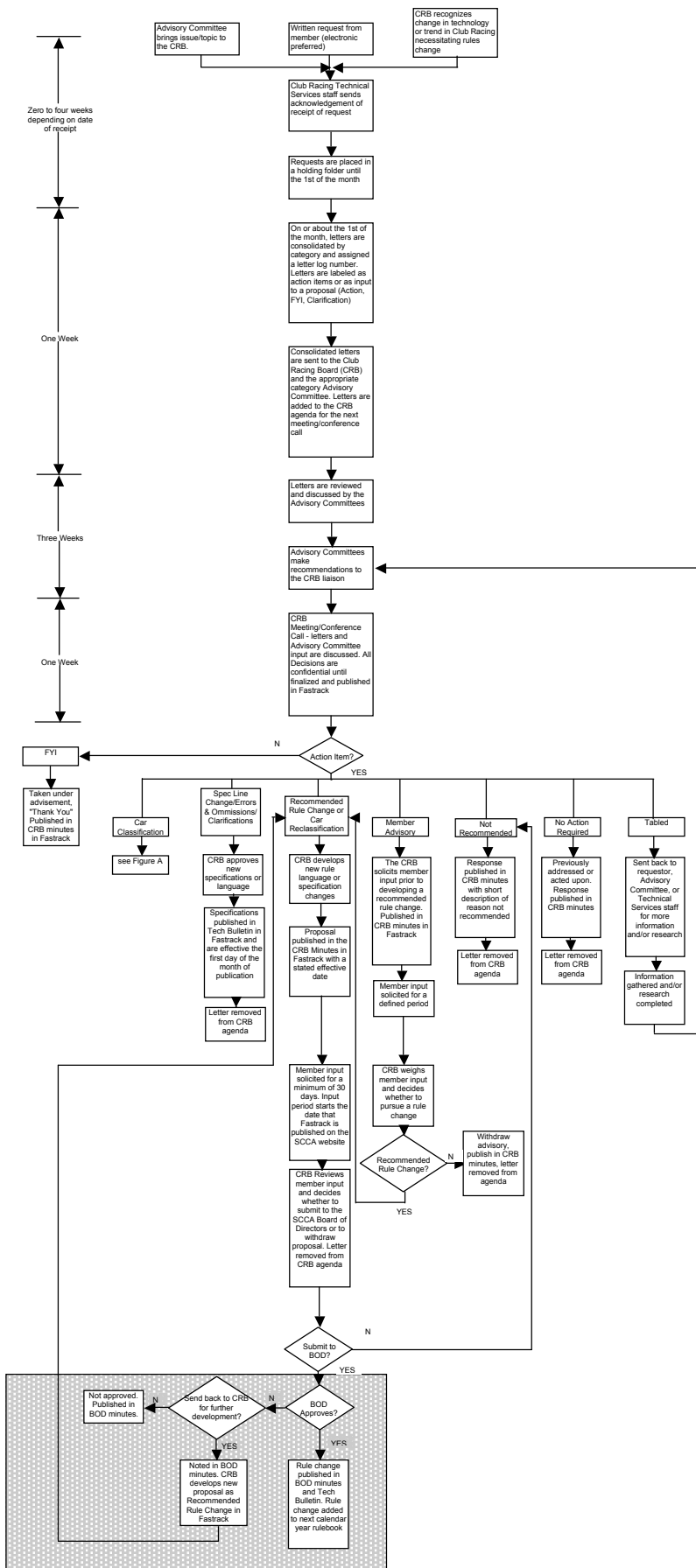
- Adding language to reinforce the intent of the rule without changing the core definition of the rule

Make changes to specifications:

- Specification line changes to weight, track, and/or choke size in GT, Production, Showroom Stock, Touring, and American Sedan categories
- Changes to engine displacement, choke size, and/or weight in Formula and Sports Racer categories

Classify Cars

Correct Errors and Omissions



Actions in the shaded area above occur in the August to December time frame

**Figure A**  
**Car Classification Process**

